

**DESCRIPTION**

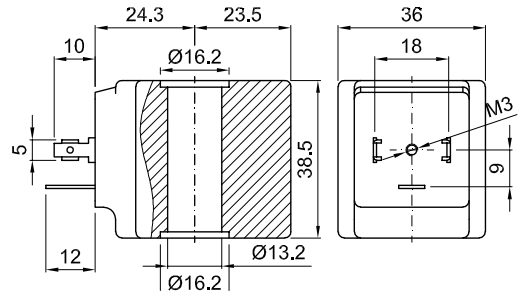
Encapsulated coil incorporating the magnetic circuit.  
 Fixing by means of a central nut.  
 Electrical connection according to DIN 43650 A  
 (A EN 175301-803 ISO 4400)



**CONSTRUCTION**

Encapsulation: Fibre-glass Polyarylamide  
 Class H Zinc-plated steel  
 Magnetic circuit Copper covered with class H insulation  
 Windings class H -10°C +80°C (ED70%)  
 Ambient temperature: class H -10°C +55°C (ED100%)  
 UL coils -10°C +60°C

**OPTIONS:** Electrical connection through cable  
 Special powers and voltages  
 Self-extinguish



CODE Class H insulation	Alternating Current Voltage	Direct Current Voltage (V)	Power ①		Voltage tolerance		Connector	Service ED
			Alternating Current (VA)	Direct Current (W)	Alternating current	Direct current		
52A	12V 50/60Hz	-	30	-	+15%	-	10349000	see note ②
52B	24V 50/60Hz	-						
52C	48V 50/60Hz	-						
52D	110V 50/60Hz	-						
52E	220/230V 50/60Hz	-						
52F	240V 50/60Hz	-						
52G	380V 50/60Hz	-						
520	-	12	-	27	-	±10%	10349000	see note ②
521	-	24						
522	-	48						

Certified version US

NOTE: The performance with UL coil could be different. Please contact the manufacturer for any further information.

U55B	24V 60Hz	-	20	-	±10%	-	10349000	see note ②
U55D	120V 60Hz	-						
U55F	240V 60Hz	-						
U550	-	12	-	14	-	±10%	10349000	see note ②
U551	-	24						

① Considering nominal voltage and an ambient temperature of 20°C

② Ambient temperature max +55°C with a duty cycle ED100%  
 Ambient temperature max +80°C with a duty cycle ED70%