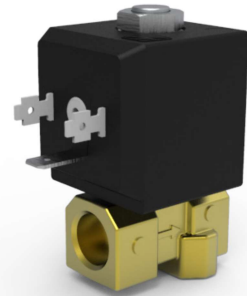


DESCRIPTION

Solenoid valve 2 way normally closed
direct acting poppet type

CONSTRUCTION

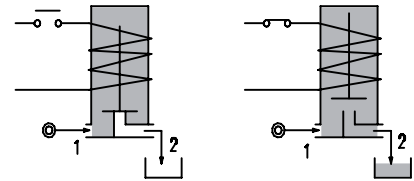
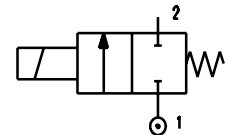
Body	Brass
Armature tube	Brass
Plunger and core	EN 1.4106
Springs	EN 1.4310
Seal material	FPM



2

FEATURES

Maximum allowable pressure PS 50bar
Maximum fluid viscosity 25 cSt (mm²/s)
Ambient temperature: from -10°C to +80°C according to the coil
Universal mounting position



CODE ②	Connection G ISO 228	Orifice mm	Kv m ³ /h	Differential pressure bar			Nominal power			Coil		Seal	Temp. range °C
				Min	Max		AC Inrush	VA Holding	DC Watt	Series	Width		
					AC	DC							
W106BV30//...	1/4"	3	0.17	0	9	5	-	22	16	1597*	30	FPM=V	-10 +140
W106BV40//...		4	0.25	0	6	4							

② Coil
Series W106 can be provided only with coil mounted.
Please refer to next page for coil codes.

Coils ②	Alternating Current		Direct Current		Electrical Connection	Connectors
	110 - 120 V / 60Hz	220 - 230 V / 50 - 60 Hz	12 V	24 V		
Series 1597* Width 33 - 17 VA	-	15972	-	-	DIN 43650A	PG9 CODE 10349000
Series 1597* Width 33 22 VA - 16W	15973	-	15974	15975		

DESCRIPTION

Class H insulation
 Voltage tolerance
 AC +6% -15%
 DC +10% -5%
 Protection class
 IP65 with connector fitted
 IP00 without connector
 Continuous service ED100%

OPTIONS

Special coil voltage
 Special coil powers

OVERALL DIMENSION

