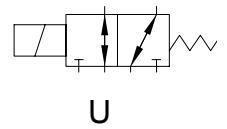
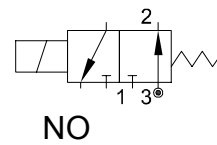
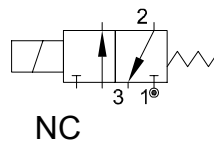


DESCRIPTION

Solenoid valve 3 way
direct acting poppet type

CONSTRUCTION

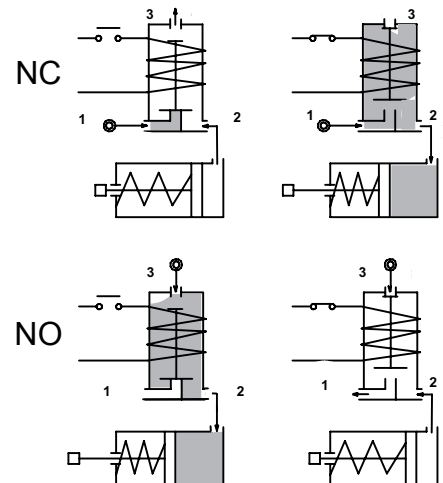
| | |
|------------------|--------------------|
| Body | Stainless steel |
| Armature tube | Stainless steel |
| Plunger and core | Stainless steel |
| Springs | Stainless steel |
| Seal material | NBR FPM EPDM |



FEATURES

Maximum allowable pressure : maximum differential pressure +10%
 Maximum fluid viscosity 25cSt (mm²/s)
 Ambient temperature: with class F coil -10°C +55°C
 with class H coil -10°C +80°C
 Universal mounting position

OPTIONS: Silver shading ring
 Electroless nickel plating
 Series 7 explosion proof coil according to ATEX - EExmII
 Exhaust port with hosedetail connection



3

| CODE ① ② | Connection G ISO 228 | Orifice mm | | Kv m ³ /h | Differential pressure bar | | | Nominal power | | | Coil | | Seal ① | Temp. range °C | | |
|---------------------------|----------------------------|---------------|------|-------------------------|------------------------------|-----|----|---------------|---------------|------------|--------|-------|--------------------------|----------------------|--------------------------|----------|
| | | Inlet | Exh. | | Min | Max | | AC Inrush | VA Holding | DC Watt | Series | Width | | | | |
| NC Normally closed | | | | | | | | | | | | | | | | |
| E311A...12///... | 1/8" | 1.2 | 1.5 | 0.04 | 0 | 15 | 15 | 12 | 8 | 6.5 | 3 | 22 | NBR=B EPDM=E FPM=V | -10 +90 | | |
| E311A...15///... | | 1.5 | 1.5 | 0.06 | 0 | 10 | 10 | | | | | | | | | |
| E311A...20///... | | 2 | 1.7 | 0.09 | 0 | 6 | 6 | | | | | | | | | |
| NO Normally open | | | | | | | | | | | | | | | | |
| E311A...15/S/... | 1/8" | 1.5 | 1.5 | 0.06 | 0 | 10 | 10 | 12 | 8 | 6.5 | 3 | 22 | | | NBR=B EPDM=E FPM=V | -10 +140 |
| E311A...17/S/... | | 1.7 | 2 | 0.07 | 0 | 6 | 6 | | | | | | | | | |
| U Universal | | | | | | | | | | | | | | | | |
| E311A...15/G/... | 1/8" | 1.5 | 1.5 | 0.06 | 0 | 6 | 6 | 12 | 8 | 6.5 | 3 | 22 | | | | |

① Seal
 ② Coil

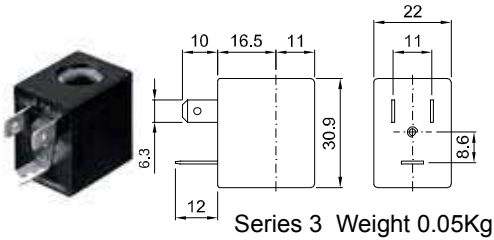
Example: E311AV15///30B FPM seal
 E311AB15/S/301 NBR seal

Coil 24V 50/60Hz NC
 Coil 24V DC NO

| COILS | Alternating Current 50/60Hz Volt | | | | | | | Direct Current Volt | | | Electrical connection | Connectors |
|--------------------------------|-------------------------------------|-----|-----|-----|------------|-----|-----|------------------------|-----|-----|--------------------------|-------------------------|
| | 12 | 24 | 48 | 110 | 220 230 | 240 | 380 | 12 | 24 | 48 | | |
| Series 3 Width 22 Code ② | 30A | 30B | 30C | 30D | 30E | 30F | 30G | 300 | 301 | 302 | DIN 46244 | PG9 code 10348000 |

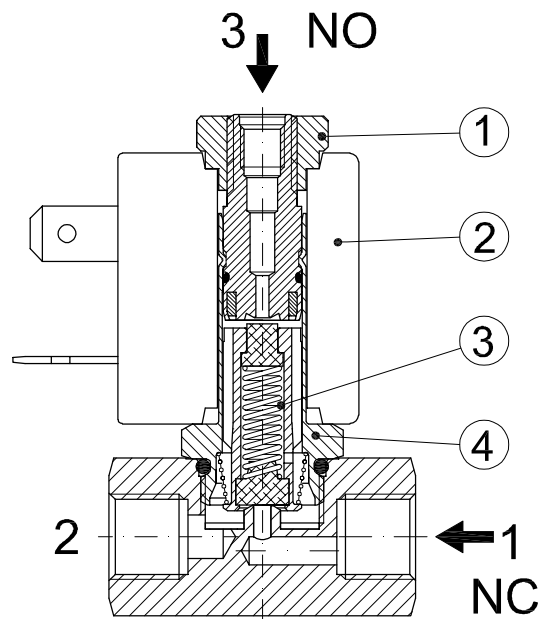
DESCRIPTION
 Class F insulation
 Voltage tolerance
 AC +15% -10%
 DC ± 10%
 Protection class
 IP65 with connector fitted
 IP00 without connector
 Continuous service ED100%

OPTIONS
 Class H insulation
 Cable attached
 Special coil voltage
 Special coil powers



SPARE PARTS LIST

1. Coil fixing nut
2. Coil
3. Plunger
4. Armature tube with core



OVERALL DIMENSION

