

**DESCRIPTION**

Solenoid valve 2 way normally closed in stainless steel AIS 316 with servo-assisted diaphragm.

With explosion proof coil certified for hazardous area:

**Ex** II 2GD Ex d IIC T6 or T5 or T4 Gb  
 Ex tb IIIC T80°C or T95°C or T130°C Db IP66  
 Tamb -10°C ÷ +35°C(T6) or +50°C(T5) or +60°C(T4)

(other certifications e.g. Gost-r, Baseefa, CCOE etc. on request)

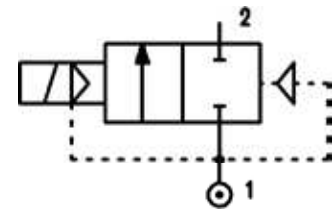


**VALVE CONSTRUCTION**

Body Stainless steel  
 Seal material FPM, NBR

**EXPLOSION PROOF COIL CONSTRUCTION**

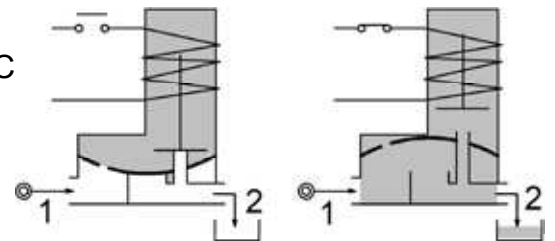
Housing Red colour alloy  
 Electrical connection 1/2" NPT



**FEATURES**

Minimum allowable pressure 0.15bar  
 Maximum allowable pressure 25bar  
 Maximum fluid viscosity 25cSt (mm<sup>2</sup>/s)  
 Ambient temperature: -10°C ÷ +35°C(T6), +50°C(T5), +60°C  
 Mounting position with vertical coil above

**OPTIONS:** Versions with slow closing diaphragm



**4**

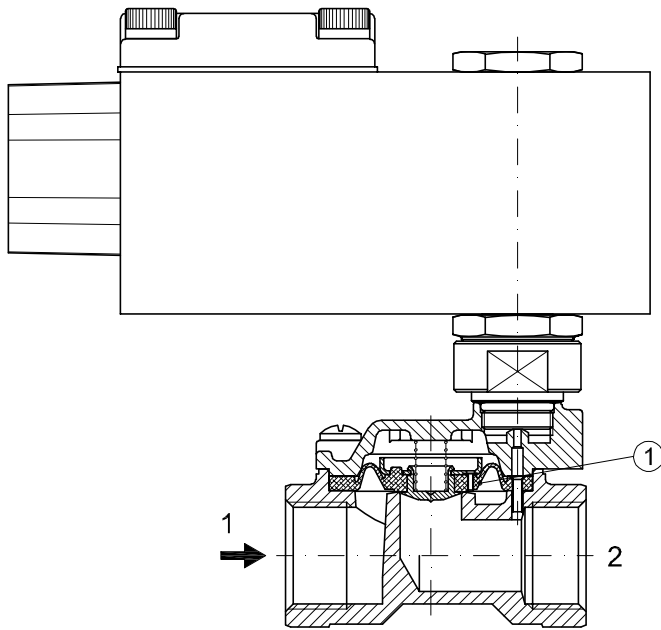
**NOTE:** The solenoid valve is suitable only with media that are **NOT** potentially explosive

CODE	Connection G	Orifice mm	Kv m <sup>3</sup> /h	Differential pressure bar			Nominal power		Coil Series	Seal	Temp. range °C
				Min	Max		AC	DC			
A177CV12/1/...	1/4"	10	1.5	0.15	15	15	12 VA	8W	A6	FPM=V	-10 +130
A177DV12/1/...	3/8"	10	1.7	0.15	15	15					
A177EV18/1/...	3/8"	12	2.2	0.15	15	15					
A177FV25/1/...	1/2"	12	2.5	0.15	15	15					

② Coil

COILS	Alternating Current 50/60Hz Volt				Direct Current Volt			Electrical connection
	24	48	110	220 230	12	24	48	
Series A6 Code ②	A6B	A6C	A6D	A6E	A60	A61	A62	1/2" NPT

**DESCRIPTION**  
 Voltage tolerance  
 AC +15% -10%  
 DC ± 10%  
 Protection class IP66  
 Continuous service ED100%



### OVERALL DIMENSION

