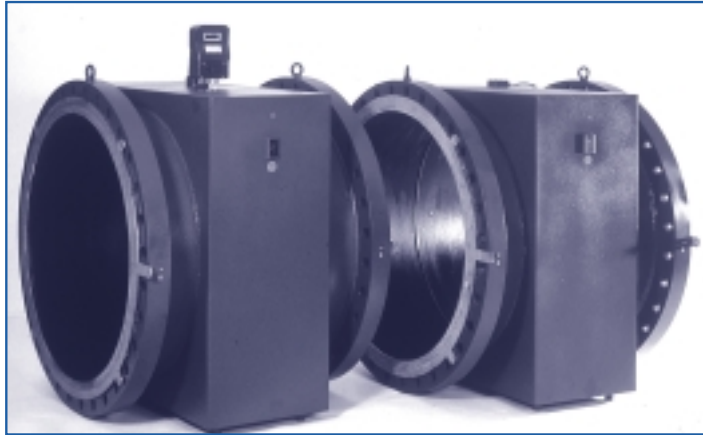




EM



Typical Uses: Flow Measurement of liquids having an electrical conductivity equal to or higher than 5µs/cm in medium and high flow rate range (Examples: Water, Sewage, Food Industry, Chemical Industry, etc.).

Construction: Inner body - Stainless Steel AISI 304; Outer case - Steel. Flanges - Steel; upon request - Stainless Steel AISI 304. External coating epoxy.

Size Range: 250-2000 mm dia.

Accuracy: 0.5%; 0.3% (see technical brochures for MC-106, MC-108, MC-208).

Dimensions: See Drawing.

TECHNICAL SPECIFICATIONS

Working Pressure: Standard - 16 bar. Upon request - 10, 25, 40, 64 bar.

Flanges: According to various national and international standards (to be defined by the customer).

Liner: Ebonite. Upon request - Teflon, EPDM.

Configuration: a. "COMPACT" - the converter is attached to the Sensor.
b. "SEPARATE" - the converter is installed separately.

Liquid Temp.: For Compact configuration - up to 80°C, with ambient temp. of up to 40°C. For Separate configuration- with PTFE (Teflon) liner: -20°C ÷ 180°C
with Ebonite liner: -20°C ÷ 80°C
with EPDM liner: -20°C ÷ - 120°C

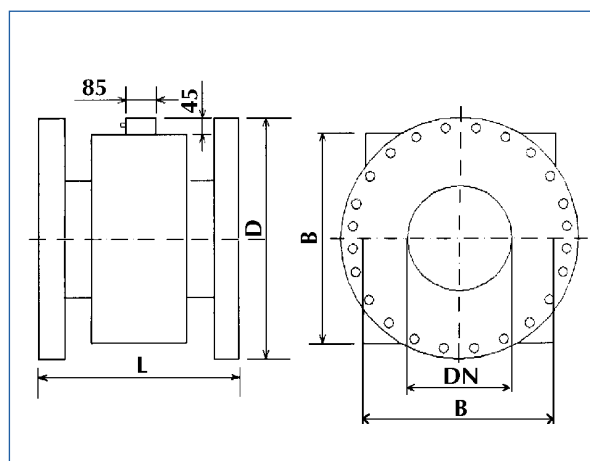
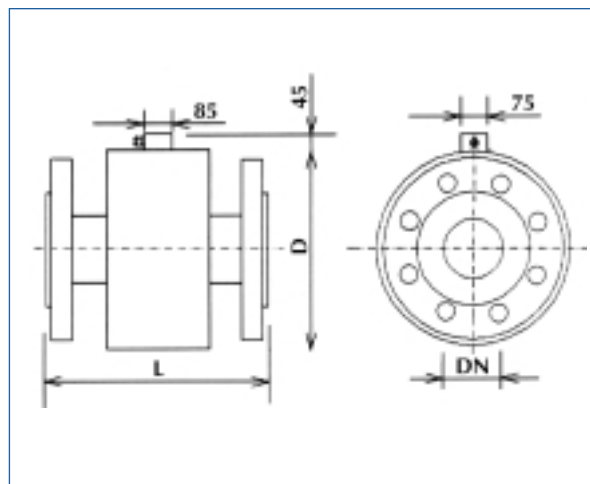
Electrodes: Standard - AISI 316. Upon request: Hastelloy B, Hastelloy C, Platinum, Tantalum, Titanium.

Environmental protection: IP 68.

WEIGHTS

DN (mm)	Kg					
	PN 6	PN 10	PN 16	PN 25	PN 60	PN 64
250	35,5	44,5	51,5	63,5	87,5	124
300	48	55	66	88	122	176
350	66	79	97	131	177	259
400	83	100	124	174	254	279
450	111	130	162	220	289	
500	132	160	211	286	371	
600	182	225	319	397		
700	250	305	398	529		
800	333	414	503	725		
900	415	509	634	924		
1000	500	653	838	1211		
1200	723	972	1284			
1400	945	1302	1730			
1600	1208	1781	2413			
1800	1587	2328	3176			
2000	2056	3013	4110			

DIMENSIONS



DIMENSIONS

DN(mm)	B(mm)	D(mm)						L(mm)				Tolerance (mm) deviation (mm)
		PN 6	PN 10	PN 16	PN 25	PN 40	PN 64	PN 6...16	PN 25	PN 40	PN 64	
250		38,5	405	415	435	460	480	450	450	450	550	
300		450	455	470	495	525	540	500	500	500	550	+0
350		500	515	530	565	590	610	550	550	550	600	-5
400		550	575	590	630	670	680	600	600	600	600	
450	625	595	615	640	670	685		600	600	600		
500	705	645	670	715	730	755		600	600	600		+0
600	827	755	780	840	845			600	600			-7
700	937	860	895	910	960			700	700			
800	1050	975	1015	1025	1085			800	800			
900	1115	1075	1115	1125	1185			900	900			+0
1000	1230	1175	1230	1255	1320			1000	1000			-13
1200	1400	1405	1455	1485				1200				
1400	1630	1630	1675	1685				1400				+0
1600	1860	1830	1915	1930				1600				-22
1800	2100	2045	2115	2130				1800				
2000	2330	2265	2325	2345				2000				

Note: D indicates the external diameter of the Sensor. in diameters of up to 400mm, and refers to the flanges in larger diameters.