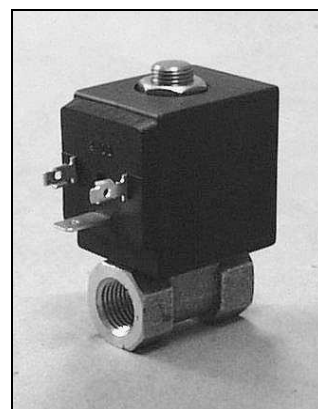


**DESCRIPTION**

Solenoid valve 2 way normally closed  
direct acting poppet type

**CONSTRUCTION**

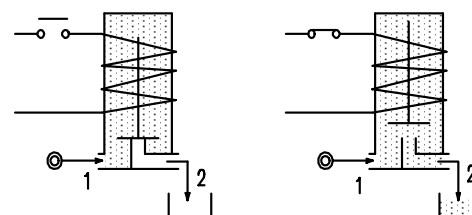
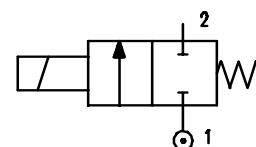
Body	Brass
Armature tube	Brass
Armature & core	Stainless steel
Spring	Stainless steel
Seal material	FPM



**2**

**FEATURES**

Maximum allowable pressure 80 bar  
 Maximum fluid viscosity 25cSt (mm<sup>2</sup>/s)  
 Ambient temperature : with class F coil -10° +55°C  
 with class H coil -10°+80°C  
 Universal mounting position



CODE ① ②	Connection G	Orifice mm	KV m <sup>3</sup> /h	Differential Pressure bar			Nominal Power			Coil		Seal ①	Temp. Range °C
				Min	Max		AC Inrush	VA Holding	DC Watt	Type	Width		
					AC	DC							
W106B....30///.....	1/4"	3	0.18	0	16	16	20	15	10	2	30	FPM=V	-10 +130
W106B....40///.....	1/4"	4	0.26	0	9	9	20	15	10	2	30	FPM=V	-10 +130

2.W106.A/09/03

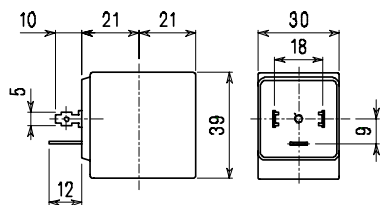
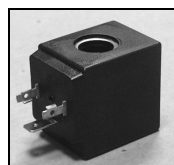
- ① Seal
- ② Coil

Example W106BV30///20E FPM seal  
Coil 220V 50/60Hz

COILS	Alternating current ~50 /60Hz Volt							Direct current Volt			Electrical Connection	Connector
	12	24	48	110	220 230	240	380	12	24	48		
Type 2 Width 30 Code ②	20A	20B	20C	20D	20E	20F	20G	200	201	202	DIN 43650A	PG9 code 10349000

**DESCRIPTION**  
 Class insulation F  
 Voltage tolerance  
 AC+15% -10%  
 DC±10%  
 Protection to IP65  
 with connector fitted  
 Continuous service  
 ED100%

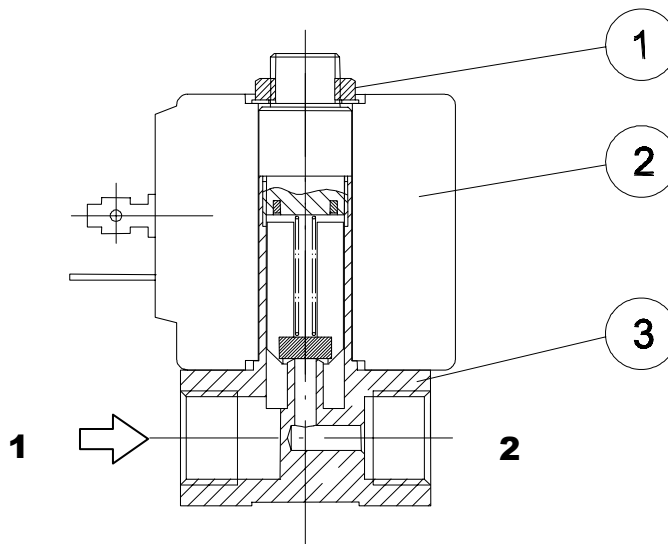
**OPTIONS**  
 Class H insulation  
 Cable attached  
 Special coil voltage  
 Special coil powers



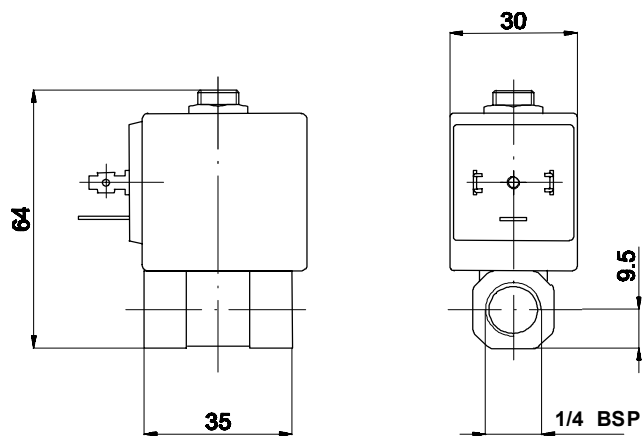
Type 2 Weight 0.12Kg

**SPARE PARTS LIST**

- 1.Coil fixing nut
- 2.Coil
- 3.Valve



**OVERALL DIMENSIONS**



Weight 0.22Kg