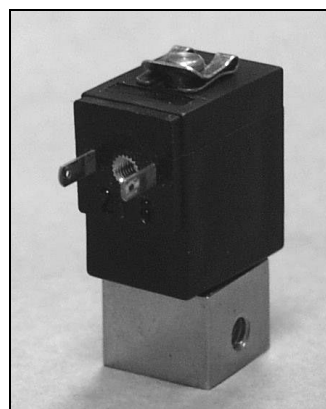


DESCRIPTION

Solenoid valve 2 way normally closed
Direct acting poppet type

CONSTRUCTION

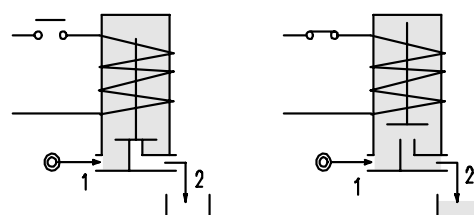
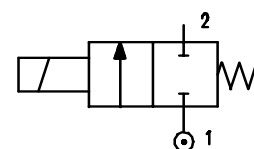
Body	Brass
Armature tube	Brass
Armature & core	Stainless steel
Spring	Stainless steel
Seal material	NBR FPM EPDM



2

FEATURES

Maximum allowable pressure 30 bar
Maximum fluid viscosity 25cSt (mm²/s)
Ambient temperature: with class F coil -10° +55°C
Universal mounting position



OPTIONS : Electroless nickel plating

CODE ① ②	Connection G	Orifice mm	KV m ³ /h	Differential Pressure bar			Nominal Power			Coil		Seal ①	Temp. Range °C
				Min	Max		AC Inrush	VA Holding	DC Watt	Type	Width		
					AC	DC							
D121L.....10///.....	M5	1	0.03	0	---	10	---	---	2	6	16	NBR=B	-10 +90
D121L.....12///.....	M5	1,2	0.037	0	---	7	---	---	2	6	16		
D121L.....12///.....	M5	1.2	0.037	0	---	12	---	---	4	6	16		
D121L.....16///.....	M5	1.6	0.055	0	---	3	---	---	2	6	16	EPDM=E	<+140
D121L.....16///.....	M5	1.6	0.055	0	---	8	---	---	4	6	16		
D121L.....20///.....	M5	2	0.082	0	---	1.4	---	---	2	6	16		
D121L.....20///.....	M5	2	0.082	0	---	4	---	---	4	6	16	FPM=V	-10 +130

2.121.A/09/03

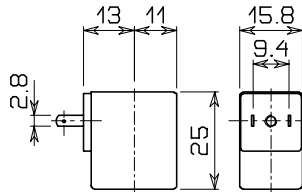
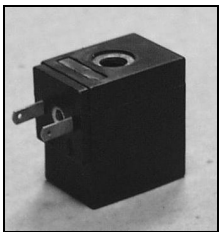
- ① Seal
- ② Coil

Example D121LV12///60112 FPM seal
Coil 24V DC 2W

COIL	Direct Current				Electrical. Connection	Connector
	12Volt		24Volt			
	2W	4W	2W	4W		
Type6 ② Width16 CODE	60012	60014	60112	60114	AMP 2.8X0.5	PG7 10348040

DESCRIPTION
 Class F insulation
 Voltage tolerance ±10%
 Protection to IP65
 with connector fitted
 Continuous service ED 100%

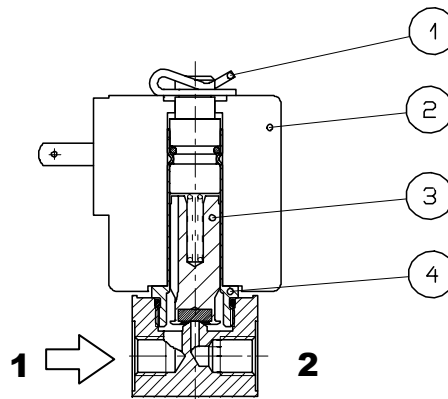
OPTIONS
 Cable attached
 Special coil voltages
 Special coil power



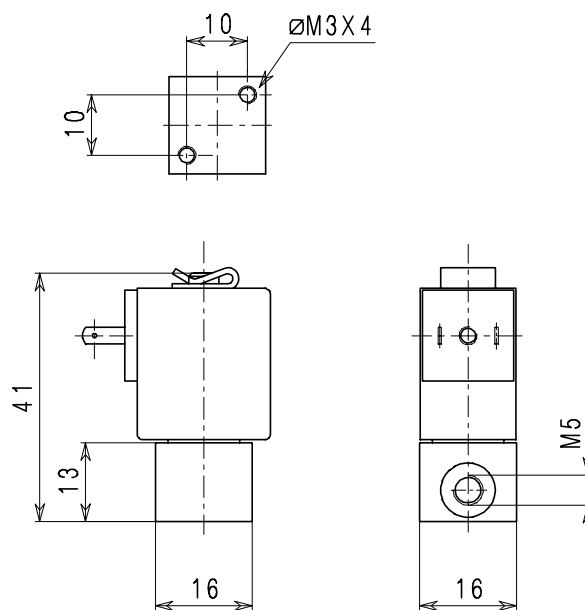
Type 6 Weight 0.02kg

SPARE PARTS LIST

- 1.Coil fixing clip
- 2.Coil
- 3.Armature assembly
- 4.Armature tube with core



OVERALL DIMENSION



Weight 0.05 Kg