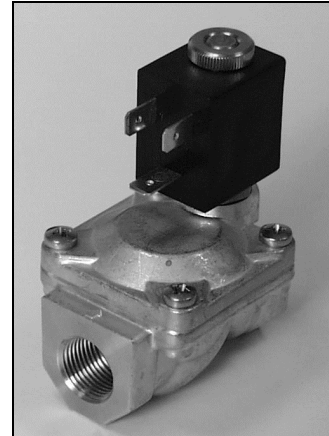


DESCRIPTION

Solenoid valve 2way normally open in Stainless Steel AISI 316 with servo-assisted diaphragm

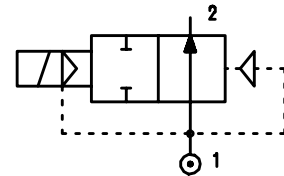


CONSTRUCTION

Body and cover	Stainless steel
Armature tube	Stainless steel
Armature & core	Stainless steel
Spring	Stainless steel
Seal material	NBR FPM EPDM

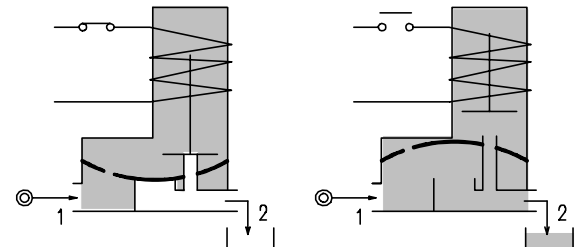
FEATURES

- Minimum differential pressure 0.15 bar
- Maximum allowable pressure 25 bar
- Maximum fluid viscosity 25cSt (mm²/s)
- Ambient temperature : with class F coil -10° +55°C
with class H coil -10°+80°C
- Preferred mounting position with vertical coil above



4

OPTIONS : Explosion proof coil to EExmII T4 Type7



CODE ① ②	Connection G	Orifice mm	KV m ³ /h	Differential pressure bar			Nominal Power			Coil		Seal ①	Temp. range °C
				Min	Max		AC Inrush	VA Holding	DC Watt	Type	Width		
					AC	DC							
E277C.....12///.....	3/8"	12	2	0.15	15	15	12	8	6.5	3	22	NBR=B	-10 +90
E277D.... .12///.....	1/2"	12	2.2	0.15	15	15	12	8	6.5	3	22	EPDM=E	<+140
E277E18///.....	3/4"	18	5.2	0.15	13	13	12	8	6.5	3	22	FPM=V	-10+130
E277F.....25///.....	1"	24	10.2	0.15	10	10	12	8	6.5	3	22		

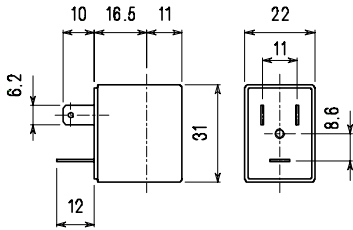
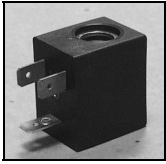
4.277.A/07/02

- ① Seal
- ② Coil

Example : E277DB12///301 NBR seal
Coil V24 DC

COIL	Alternating current ~50 /60Hz Volt							Direct Current Volt			Electrical connection	Connector
	12	24	48	110	220 230	240	380	12	24	48		
Type 3 Width 22 Code ②	30A	30B	30C	30D	30E	30F	30G	300	301	302	DIN 46244	PG9 code 10348000

DESCRIPTION
 Class F insulation
 Voltage tolerance
 AC +15% -10%
 DC ± 10%
 Protection to IP65 with
 connector fitted
 IP00 without connector

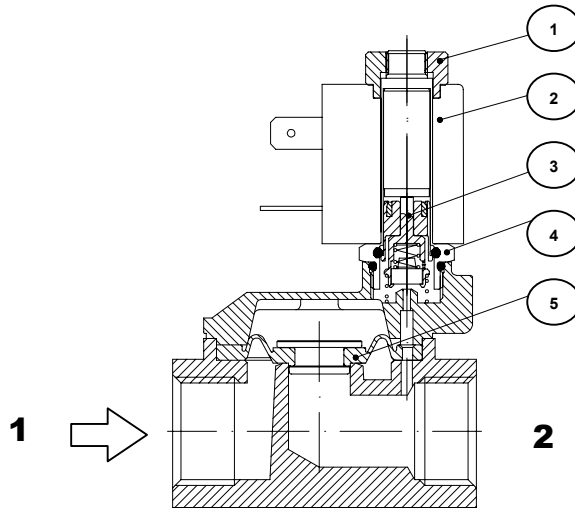


Type 3 Weight 0.05Kg

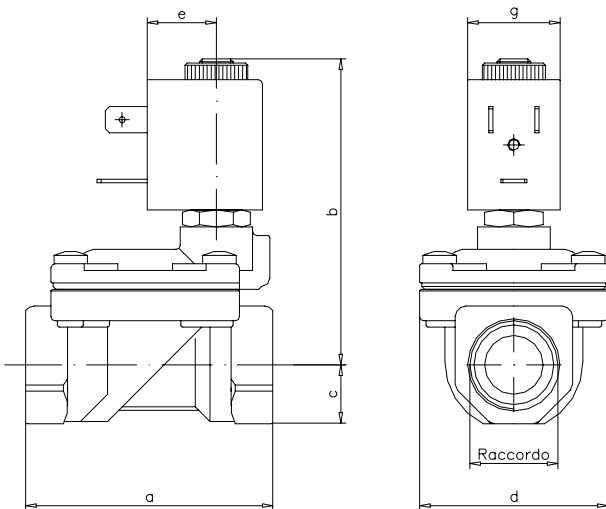
OPTIONS
 Class H insulation
 Cable attached
 Special coil voltage
 Special coil powers

SPARE PARTS LIST

1. Coil fixing nut
2. Coil
3. Seal assembly
4. Armature tube
5. Diaphragm assembly



OVERALL DIMENSIONS



CONNECTION	a	b	c	d	f	g	Weight Kg Type 2
G3/8"Ø12	59	74	14	45	6	22	0.51
G1/2"	59	74	14	45	6	22	0.51
G3/4"	80	77	18	54	8.5	22	0.75
G1"	100	89	20	72	---	22	1.35