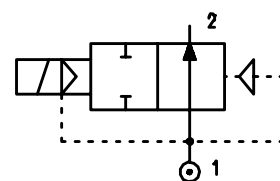
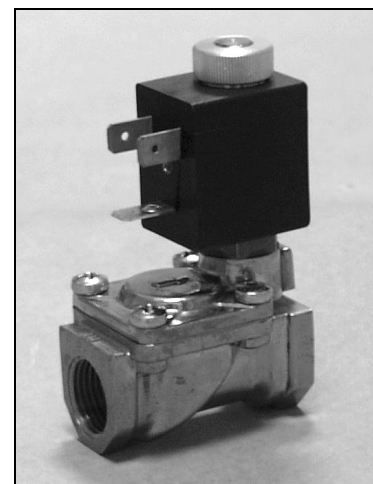


DESCRIPTION

Solenoid valve 2way normally open with servo-assisted diaphragm.

CONSTRUCTION

Body and cover	Brass
Armature tube	Brass
Armature & core	Stainless steel
Spring	Stainless steel
Seal material	NBR FPM EPDM

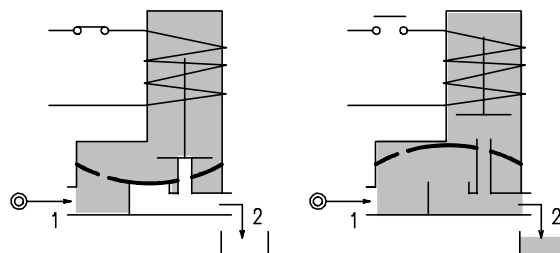


4

FEATURES

- Minimum differential pressure 0.15 bar
- Maximum allowable pressure 25 bar
- Maximum fluid viscosity 25cSt (mm²/s)
- Ambient temperature : with class F coil -10° +55°C
with class H coil -10°+80°C
- Preferred mounting position with vertical coil above.

- OPTIONS :** Electroless nickel plating
Explosion proof coil to EExmIIT4 Type 7
Stainless steel armature tube



CODE ① ②	Connection BSP	Orifice mm	KV m ³ /h	Differential Pressure bar			Nominal Power			Coil		Seal ①	Temp. Range °C
				Min	Max		AC Inrush	VA Holding	DC Watt	Type	Width		
					AC	DC							
E207B....10///.....	1/4"	10	1.5	0.15	15	15	12	8	6.5	3	22	NBR=B	-10 +90
E207C.....10///.....	3/8"	10	1.7	0.15	15	15	12	8	6.5	3	22		
E207C.....12///.....	3/8"	12	2	0.15	15	15	12	8	6.5	3	22		
E207D.....12///.....	1/2"	12	2.2	0.15	15	15	12	8	6.5	3	22	EPDM=E	<+140
E207E18///.....	3/4"	18	5.2	0.15	13	13	12	8	6.5	3	22		
E207F.....25///.....	1"	24	10.2	0.15	10	10	12	8	6.5	3	22	FPM=V	-10 +130
E207G.....38///.....	1 1/4"	37	18	0.15	10	10	20	15	10	2	30		
E207H.....38///.....	1 1/2"	37	21	0.15	10	10	20	15	10	2	30		
E207I.....50///.....	2"	50	36	0.15	10	10	20	15	10	2	30		

4.207.A/01/02

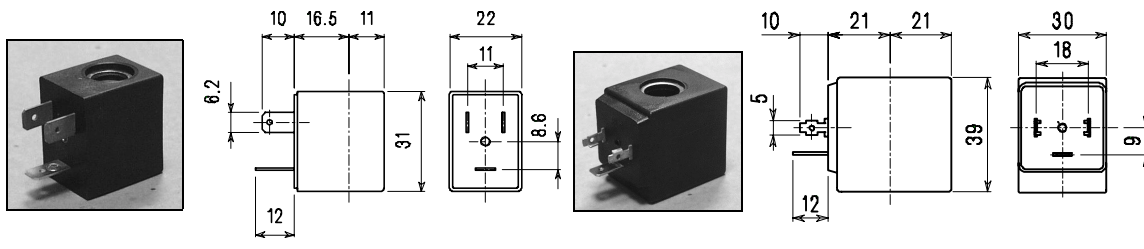
- ① Seal
- ② Coil

Example E207DB12///301 NBR Seal
Coil 24V DC

COIL	Alternating current ~50 /60Hz Volt							Direct current Volt			Electrical connection	Connectors
	12	24	48	110	220 230	240	380	12	24	48		
Type 3 Width 22 Code ②	30A	30B	30C	30D	30E	30F	30G	300	301	302	DIN 46244	PG9 code 10348000
Type 2 Width 30 Code ②	20A	20B	20C	20D	20E	20F	20G	200	201	202	DIN 43650A	PG9 code 10349000

DESCRIPTION
 Class F insulation
 Voltage tolerance
 CA+15% -10%
 DC ± 10%
 Protection to IP65
 with connector fitted
 IP00 without connector

OPTIONS
 Class H insulation
 Cable attached
 Special coil voltage
 Special coil powers

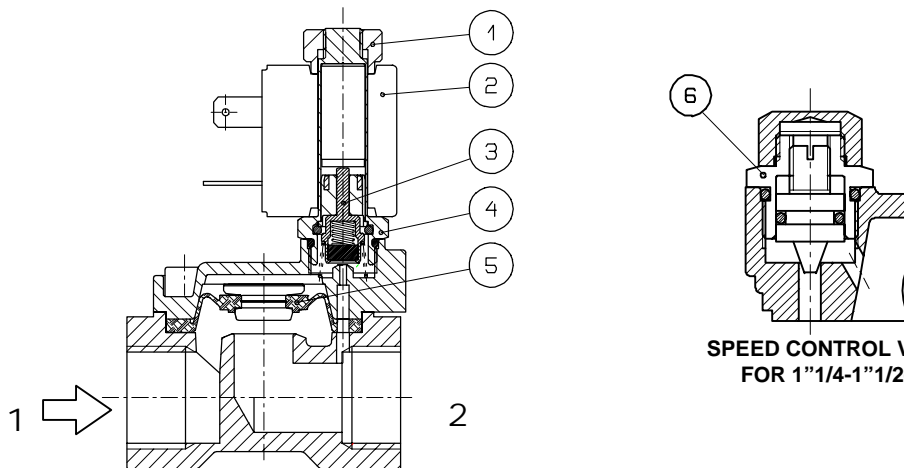


Type 3 Weight 0.05Kg

Type 2 Weight 0.2Kg

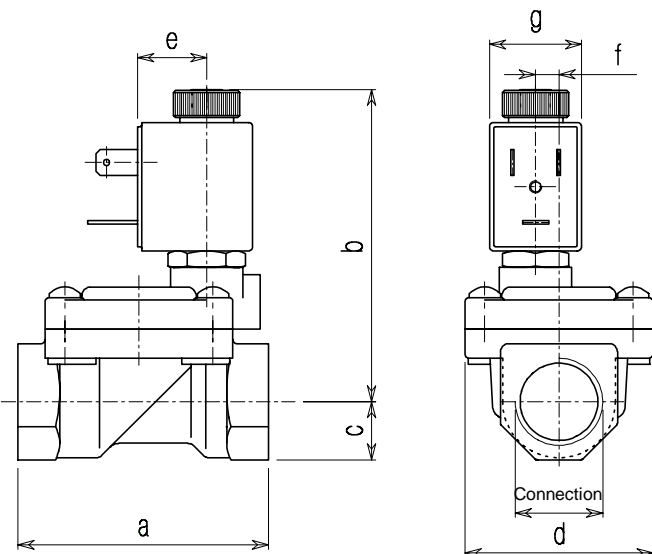
SPARE PARTSLIST

- 1.Coil fixing nut
- 2.Coil
- 3.Seal assembly
- 4.Armature tube
- 5.Diaphragm assembly
- 6.Speed control valve



**SPEED CONTROL VALVE
 FOR 1"1/4-1"1/2-2"**

OVERALL DIMENSION



Connection	a	b	c	d	e	f	g	Weight kg
1/4"BSPØ10	47	67	11	32	16	---	22	0.25
3/8"BSPØ10	47	67	11	32	16	---	22	0.25
3/8"BSPØ12	60	76	14	45	16	6	22	0.45
1/2"BSP	60	76	14	45	16	6	22	0.45
3/4"BSP	75	78	18	55	20	8.5	22	0.66
1"BSP	96	88	20	72	32	---	22	1.20
1"1/4"BSP	144	98	28	102	45	---	30	3.20
1"1/2BSP	144	98	28	102	45	---	30	2.90
2"BSP	152	122	35	119	48	---	30	4.50