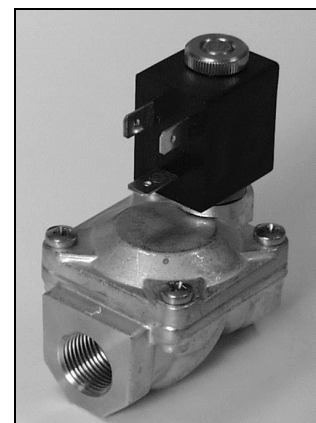


DESCRIPTION

Solenoid valve 2 way normally closed in Stainless steel AISI 316 with servo-assisted diaphragm

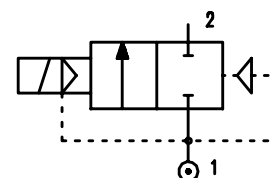


CONSTRUCTION

| | |
|-----------------|--------------------|
| Body and cover | Stainless steel |
| Armature tube | Stainless steel |
| Armature & core | Stainless steel |
| Spring | Stainless steel |
| Seal material | NBR FPM EPDM |

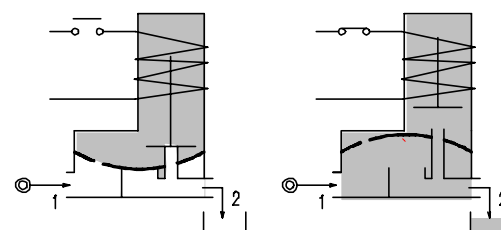
FEATURES

- Minimum differential pressure 0.15 bar
- Maximum allowable pressure 25 bar
- Maximum fluid viscosity 25cSt (mm²/s)
- Ambient temperature : with class F coil -10° +55°C
with class H coil -10°+80°C
- Preferred mounting position with vertical coil above



4

- OPTIONS :** Manual override
Explosion proof coil to EExmIIT4 Type7
Version with speed control
Version for vacuum applications (air/gas)



| CODE ① ② | Connection G | Orifice mm | KV m ³ /h | Differential pressure bar | | | Nominal power | | | Coil | | Seal ① | Temp. range °C |
|-----------------------|-----------------|---------------|-------------------------|---------------------------|-----|----|---------------|---------------|------------|------|-------|-----------|-------------------|
| | | | | Min | Max | | AC Inrush | VA Holding | DC Watt | Type | Width | | |
| | | | | | AC | DC | | | | | | | |
| E177C.....12///..... | 3/8" | 12 | 2 | 0.15 | 15 | 15 | 12 | 8 | 6.5 | 3 | 22 | NBR=B | -10 +90 |
| E177D.... .12///..... | 1/2" | 12 | 2.2 | 0.15 | 15 | 15 | 12 | 8 | 6.5 | 3 | 22 | EPDM=E | <+140 |
| E177E18///..... | 3/4" | 18 | 5.2 | 0.15 | 13 | 13 | 12 | 8 | 6.5 | 3 | 22 | FPM=V | -10+130 |
| E177F.....25///..... | 1" | 24 | 10.2 | 0.15 | 10 | 10 | 12 | 8 | 6.5 | 3 | 22 | | |

4.177.A/07/02

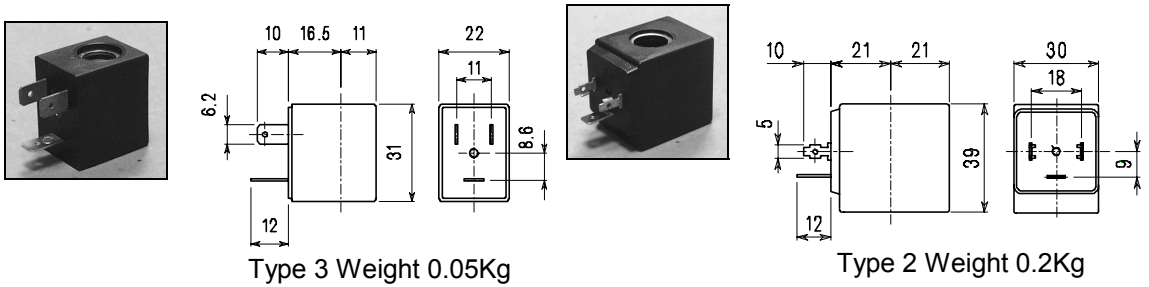
- ① Seal
- ② Coil

Example E177DB12///301
Coil V24 DC

NBR seal

| COIL | Alternating Current ~50 /60Hz Volt | | | | | | | Direct current Volt | | | Electrical connection | Connectors |
|------------------------------|---------------------------------------|-----|-----|-----|------------|-----|-----|------------------------|-----|-----|--------------------------|-------------------------|
| | 12 | 24 | 48 | 110 | 220 230 | 240 | 380 | 12 | 24 | 48 | | |
| Type 3 Width 22 Code ② | 30A | 30B | 30C | 30D | 30E | 30F | 30G | 300 | 301 | 302 | DIN 46244 | PG9 code 10348000 |
| Type 2 Width 30 Code ② | 20A | 20B | 20C | 20D | 20E | 20F | 20G | 200 | 201 | 202 | DIN 43650A | PG9 Code 10349000 |

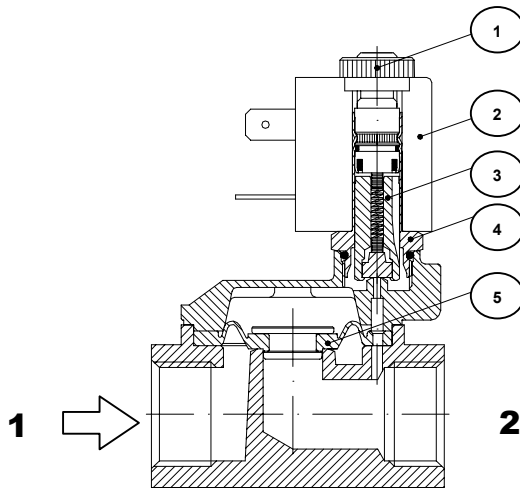
DESCRIPTION
 Class F insulation
 Voltage tolerance
 CA+15% -10%
 DC ± 10%
 Protection to IP65
 with connector fitted
 IP00 without connector



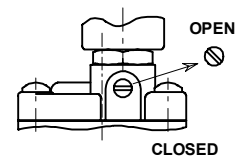
OPTIONS
 Class H insulation
 Cable attached
 Special coil voltage
 and power

SPARE PARTS LIST

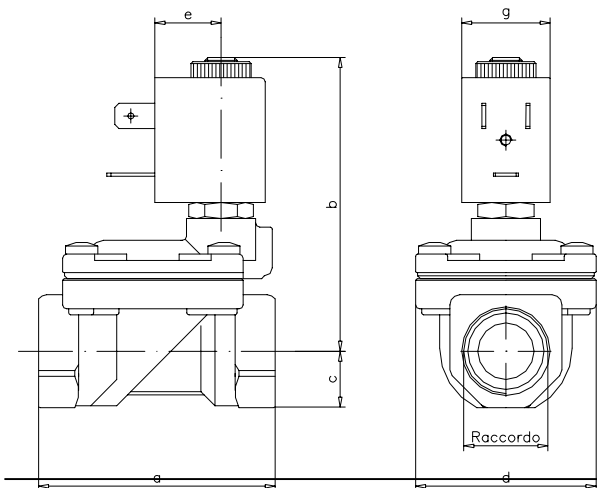
- 1.Coil fixing nut
- 2.Coil
- 3.Armature assembly
- 4.Armature tube with core
- 5.Diaphragm assembly
- 6.Speed control valve



MANUAL OVERRIDE



OVERALL DIMENSIONS



| CONNECTION | a | b | c | d | f | g | Weight kg | |
|------------|-----|----|----|----|-----|----|-----------|--------|
| | | | | | | | Type 3 | Type 2 |
| G3/8"Ø12 | 59 | 74 | 14 | 45 | 6 | 22 | | +0.15 |
| G1/2" | 59 | 74 | 14 | 45 | 6 | 22 | | +0.15 |
| G3/4" | 80 | 77 | 18 | 54 | 8.5 | 22 | | +0.15 |
| G1" | 100 | 89 | 20 | 72 | --- | 22 | | +0.15 |