

**DESCRIPTION**

Solenoid valve 2 way normally closed  
Direct acting poppet type

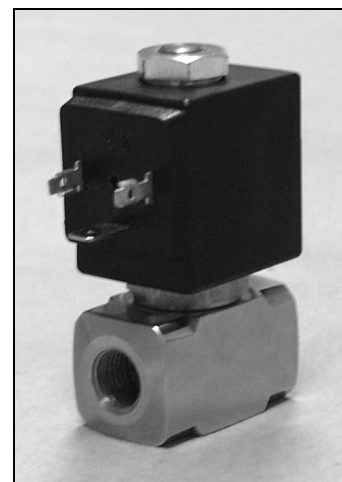
**CONSTRUCTION**

Body	Stainless steel
Armature tube	Stainless steel
Armature & core	Stainless steel
Springs	Stainless steel
Seal material	NBR FPM EPDM PTFE

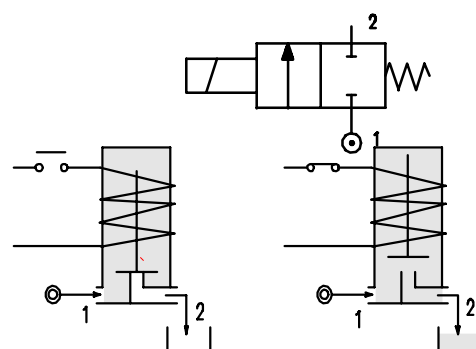
**FEATURES**

Maximum allowable pressure 100 bar  
Maximum fluid viscosity 25cSt (mm<sup>2</sup>/s)  
Ambient temperature: with class F coil -10° +55°C  
with class H coil -10°+80°C  
Universal mounting position

**OPTIONS:** Silver shading ring  
Special seal  
Version for use with oxygen



**2**



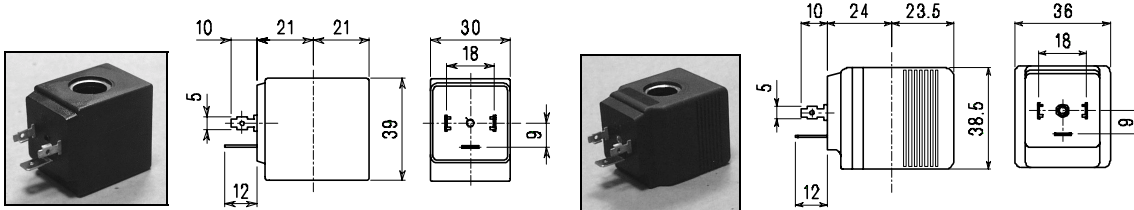
CODE ① ②	Connection BSP	Orifice mm	KV m <sup>3</sup> /h	Differential Pressure bar			Nominal Power			Coil		Seal ①	Temp. Range °C
				Min	Max		AC Inrush	VA Holding	DC Watt	Type	Width		
					AC	DC							
E110B.....20///.....	1/4"	2	0.1	0	22	20	20	15	10	2	30	NBR=B	-10 +90
E110B.....35///.....	1/4"	3.5	0.32	0	10	8	20	15	10	2	30		
E110B.....52///.....	1/4"	5.2	0.47	0	4	1.8	20	15	10	2	30		
E110C.....20///.....	3/8"	2	0.1	0	22	20	20	15	10	2	30		
E110C.....35///.....	3/8"	3.5	0.32	0	10	8	20	15	10	2	30		
E110C.....52///.....	3/8"	5.2	0.47	0	4	1.8	20	15	10	2	30		
E110C.....64///.....	3/8"	6.4	0.64	0	3.5	1	20	15	10	2	30	EPDM=E	<+140
E110D.....20///.....	1/2"	2	0.1	0	22	20	20	15	10	2	30		
E110D.....35///.....	1/2"	3.5	0.32	0	10	8	20	15	10	2	30		
E110D.....52///.....	1/2"	5.2	0.47	0	4	1.8	20	15	10	2	30		
E110D.....64///.....	1/2"	6.4	0.64	0	3.5	1	20	15	10	2	30		
E110B.....20///.....	1/4"	2	0.1	0	38	35	40	30	27	5	36	FPM=V ③	-10 +130
E110B.....35///.....	1/4"	3.5	0.32	0	20	19	40	30	27	5	36		
E110B.....52///.....	1/4"	5.2	0.47	0	10	9	40	30	27	5	36		
E110C.....20///.....	3/8"	2	0.1	0	38	35	40	30	27	5	36		
E110C.....35///.....	3/8"	3.5	0.32	0	20	19	40	30	27	5	36		
E110C.....52///.....	3/8"	5.2	0.47	0	10	9	40	30	27	5	36		
E110C.....64///.....	3/8"	6.4	0.64	0	6.5	5	40	30	27	5	36	PTFE=W	-10 +160
E110D.....20///.....	1/2"	2	0.1	0	38	35	40	30	27	5	36		
E110D.....35///.....	1/2"	3.5	0.32	0	20	19	40	30	27	5	36		
E110D.....52///.....	1/2"	5.2	0.47	0	10	9	40	30	27	5	36		
E110D.....64///.....	1/2"	6.4	0.64	0	6.5	5	40	30	27	5	36		

2.110.A/01/02

- ① Seal Example E110BE35///521 EPDM seal
- ② Coil Coil 24V DC
- ③ Maximum allowable < 0.2 nL/h Not available on orifice Ø 6,4mm

COILS	Alternating current ~50 /60Hz Volt							Direct current Volt			Electrical connection	Connectors
	12	24	48	110	220 230	240	380	12	24	48		
Type <b>2</b> Width 30 Code ②	20A	20B	20C	20D	20E	20F	20G	200	201	202	DIN 43650A	PG9 code 10349000
Type <b>5</b> Width 36 Code ②	52A	52B	52C	52D	52E	52F	52G	520	521	522	DIN 43650A	PG11 code 10349001

**DESCRIPTION**  
 Class insulation  
 Type 2= F Type 5=H  
 Voltage tolerance  
 CA+15% -10%  
 DC ±10%  
 Protection to IP65  
 with connector fitted  
 Continuous service  
 ED100%  
**OPTIONS**  
 Class H insulation  
 (Type 2)  
 Cable attached  
 Special coil voltage  
 Special coil powers

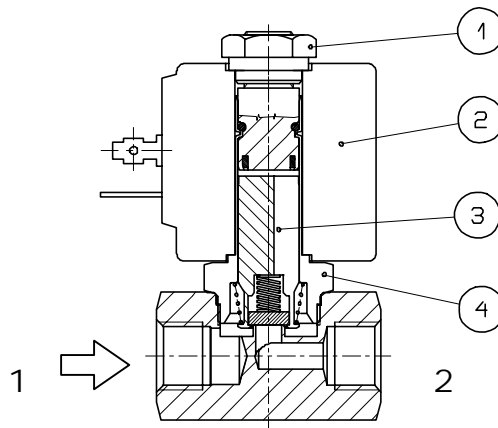


Type 2 Weight 0.12Kg

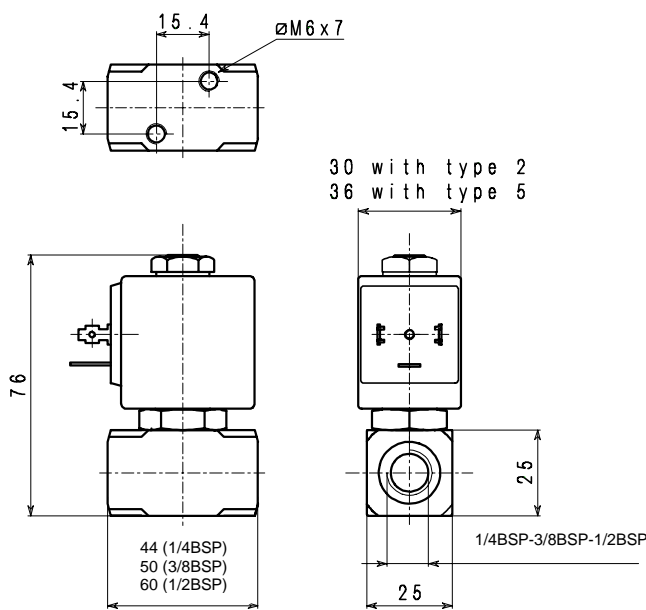
Type 5 Weight 0.2Kg

**SPARE PARTS LIST**

- 1.Coil fixing nut
- 2.Coil
- 3.Armature assembly
- 4.Armature tube with core



**OVERALL DIMENSION**



Weight 0.36 Kg with coil type 2  
 Weight 0.44 Kg with coil type 5