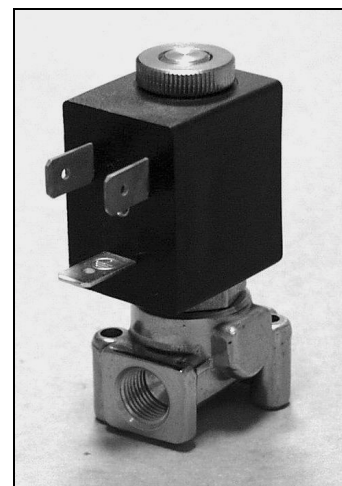


**DESCRIPTION**

Solenoid valve 2 way normally closed  
direct acting poppet type

**CONSTRUCTION**

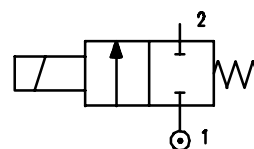
Body	Brass
Armature tube	Brass
Armature & core	Stainless steel
Spring	Stainless steel
Seal material	NBR FPM EPDM



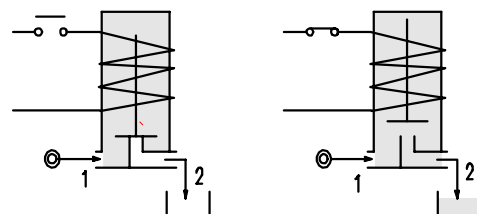
**2**

**FEATURES**

Maximum allowable pressure 50 bar  
 Maximum fluid viscosity 25cSt (mm<sup>2</sup>/s)  
 Ambient temperature : with class F coil -10° +55°C  
 with class H coil -10°+80°C  
 Universal mounting position



**OPTIONS :** Armature tube in Stainless Steel  
 Manual override  
 Electroless nickel plating  
 Explosion proof coil to EExmII T4 Type 7  
 Version for use with oxygen



CODE ① ②	Connection BSP	Orifice mm	KV m <sup>3</sup> /h	Differential Pressure bar			Nominal Power			Coil		Seal ①	Temp. Range °C
				Min	Max		AC Inrush	VA Holding	DC Watt	Type	Width		
					AC	DC							
E105A.....12///.....	1/8"	1.2	0.04	0	25	25	12	8	6.5	3	22	NBR=B	-10 +90
E105A.....15///.....	1/8"	1.5	0.06	0	16	16	12	8	6.5	3	22		
E105A.....20///.....	1/8"	2	0.09	0	12	10	12	8	6.5	3	22		
E105A.....25///.....	1/8"	2.5	0.14	0	10	5.5	12	8	6.5	3	22	EPDM=E	<+140
E105A.....31///.....	1/8"	3.1	0.19	0	5	2	12	8	6.5	3	22		
E105A.....40///.....	1/8"	4	0.35	0	4	1.5	12	8	6.5	3	22		
E105A.....20///.....	1/8"	2	0.09	0	25	15	15	11	5	4	30	FPM=V	-10 +130
E105A.....25///.....	1/8"	2.5	0.14	0	16	10	15	11	5	4	30		
E105A.....31///.....	1/8"	3.1	0.19	0	8	6	15	11	5	4	30		
E105A.....40///.....	1/8"	4	0.35	0	6	3.5	15	11	5	4	30		

2.105.A/01/02

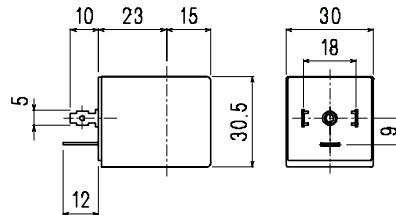
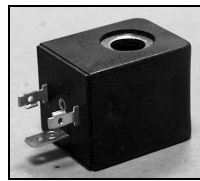
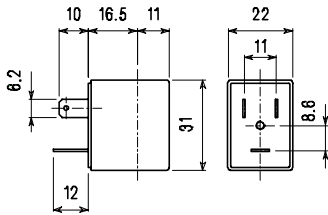
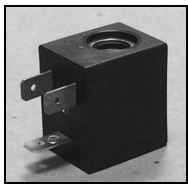
- ① Seal
- ② Coil

Example E105AB20///30B NBR seal  
 Coil 24V 50/60Hz

COILS	Alternating current ~50 /60Hz Volt							Direct current Volt			Electrical Connection	Connectors
	12	24	48	110	220 230	240	380	12	24	48		
Type 3 Width 22 Code ②	30A	30B	30C	30D	30E	30F	30G	300	301	302	DIN 46244	PG9 code 10348000
Type 4 Width 30 Code ②	40A	40B	40C	40D	40E	40F	40G	400	401	402	DIN 43650A	PG9 code 10349000

**DESCRIPTION**  
 Class F insulation  
 Voltage tolerance  
 CA+15% -10%  
 DC ± 10%  
 Protection to IP65  
 with connector fitted  
 Continuous service  
 ED100%

**OPTIONS**  
 Class H insulation  
 Cable attached  
 Special coil voltages  
 Special coil powers

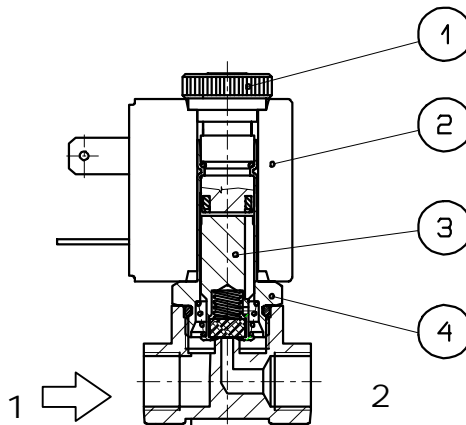


Type 3 Weight 0,5Kg

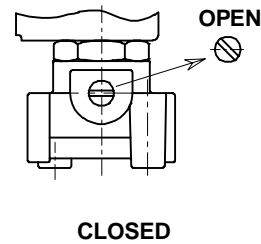
Type 4 Weight 0.1Kg

**SPARE PARTS LIST**

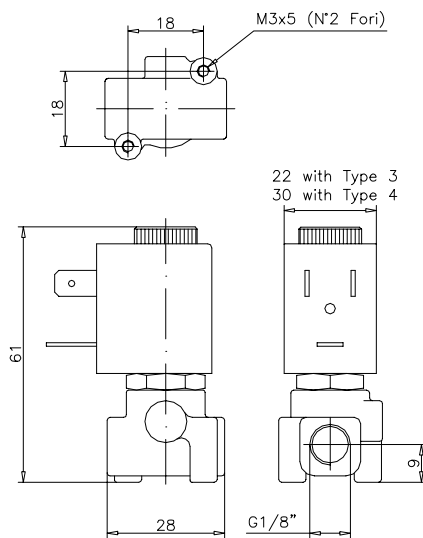
- 1.Coil fixing nut
- 2.Coil
- 3.Armature assembly
- 4.Amatuere tube with core



**MANUAL OVERRIDE**



**OVERALL DIMENSION**



Weight 0.13 Kg coil type 3  
 Weight 0.18 Kg coil type 4