

**DESCRIPTION**

Solenoid valve 2 way normally closed in Stainless steel AISI 316 with servo-assisted diaphragm, with explosion proof coil EEx “d” IIC T6

**VALVE CONSTRUCTION**

Body and cover                      Stainless steel  
 Seal material                        NBR  
   FPM

**EXPLOSION PROOF CONSTRUCTION**

Housing                               Alloy in black colour  
 Electrical connection           1/2” NPT

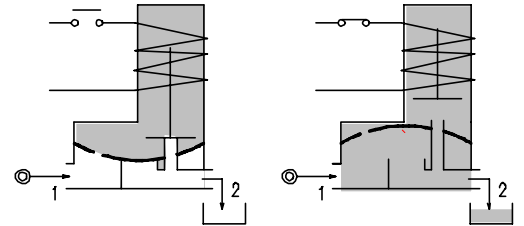
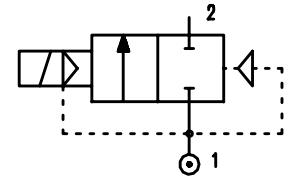


**FEATURES**

Minimum differential pressure 0.15 bar  
 Maximum allowable pressure 25 bar  
 Maximum fluid viscosity 25cSt (mm<sup>2</sup>/s)  
 Ambient temperature : -10° +40°C

Mounting position with vertical coil above

**OPTIONS :** Manual override  
 Version with speed control



CODE ①      ②	Connection G	Orifice mm	KV m <sup>3</sup> /h	Differential pressure bar			Nominal power		Coil Type	Seal ①	Temp. range °C
				Min	Max		AC Holding	DC Watt			
					AC	DC					
A177C.....12///.....	3/8"	12	2	0.15	15	15	20VA	14W	96	NBR=B	-10 +90
A177D.... .12///.....	1/2"	12	2.2	0.15	15	15					
A177E ... .18///.....	3/4"	18	5.2	0.15	13	13					
A177F.....25///.....	1"	24	10.2	0.15	10	10					

4.A177.A/07/02

- ① Seal
- ② Coil

Example   A177DB12///96E   NBR seal  
 Coil V220 –230 50/60Hz

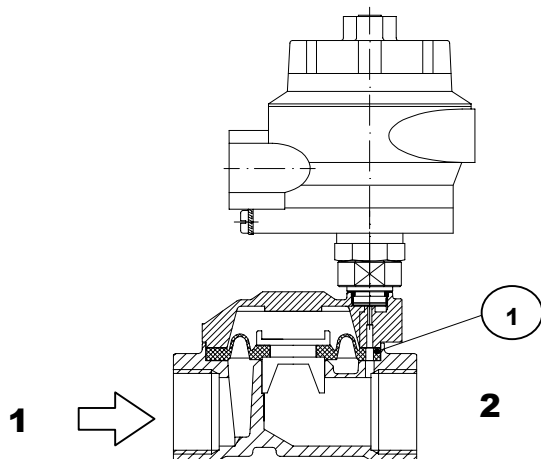
COIL	Alternating Current ~50 /60Hz Volt					Direct Current Volt			Coll. elettrico
	24	48	110	220 230	420	12	24	48	
Type <b>96</b> Code ②	96B	96C	96D	96E	on request	960	961	962	1/2" NPT

**DESCRIPTION**  
Voltage tolerance  
-10% +15%.

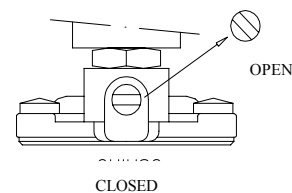
**OPTIONS**  
Electrical conn 3/4 NPT  
1/2" - 3/4" GAS Uni 6125

### SPARE PARTS LIST

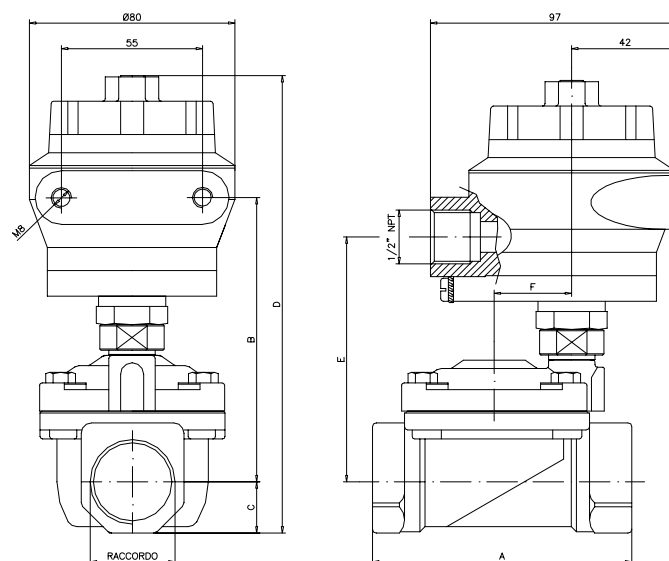
1. Diaphragm assembly



### MANUAL OVERRIDE



### OVERALL DIMENSIONS



CONNECTION	A	B	C	D	E	F	Weight Kg
G3/8"Ø12	59	87	17	153.5	78	17	1.31
G1/2"	59	87	17	153.5	78	17	1.31
G3/4"	79	100	21.5	163	91	22.2	1.55
G1"	96	100	27	176.5	91	30.2	2.15