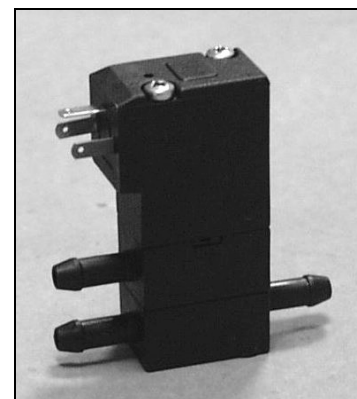


**DESCRIPTION**

Solenoid valve 3 way direct acting  
with dry armature  
No metal parts in contact with the media



**CONSTRUCTION**

Body Acetal resin  
Seal material NBR

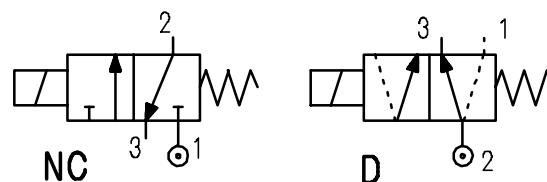
**FEATURES**

Maximum allowable pressure 2 bar  
Maximum fluid viscosity 25cSt (mm<sup>2</sup>/s)  
Ambient temperature : with class F coil -10° +55°C  
Universal mounting position

**3**

**ELECTRICAL OPERATING FEATURES**

Duty cycle : 100%  
Insulation class : F  
Voltage tolerance : -5%+10%  
Protection to IP65 with connector fitted



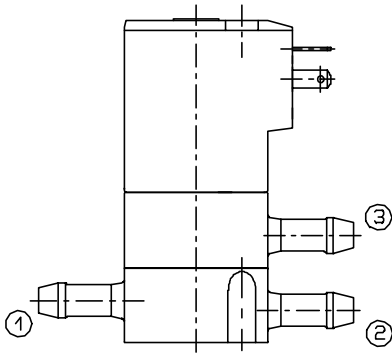
CODE	Connection	Orifice mm	KV m <sup>3</sup> /h	Differential Pressure bar		Nominal Power			Voltage		Connector
				Min	Max	Alternating current VA		Direct current Watt	AC	DC	
				Inrush	Holding						
				<b>NC Normally closed</b>		<b>D Diverting</b>					
① E330PB32/.../106620	ø5.5	3.2	0.2	0	0.4	6.5	4.5	---	230	---	PG7 10348040
① D330PB32/.../111140	ø5.5	3.2	0.2	0	0.4	---	---	4	---	12	
① D330PB32/.../111150	ø5.5	3.2	0.2	0	0.4	---	---	4	---	24	

3.330.A/01/02

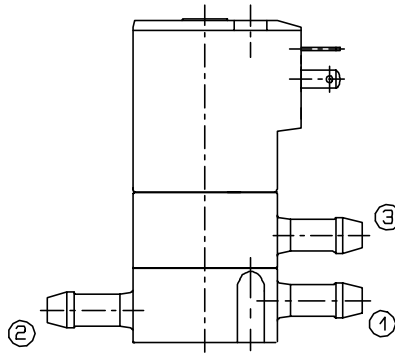
① Configuration

P.S. : Solenoid valves and coils are not supplied separately

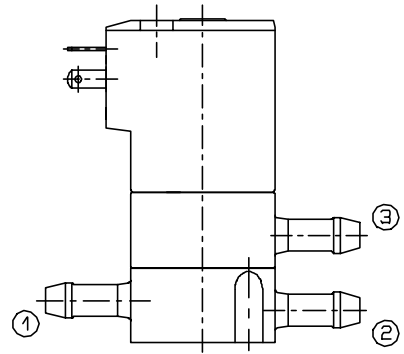
**CONFIGURATIONS**



**CODE /**



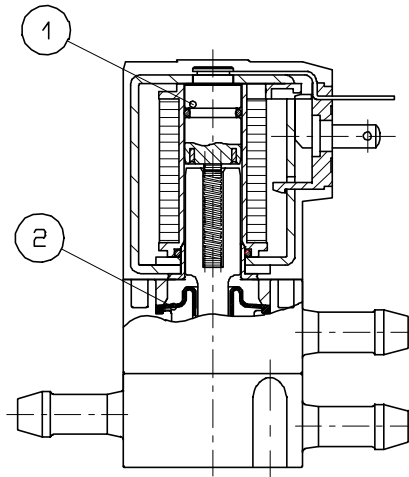
**CODE D**



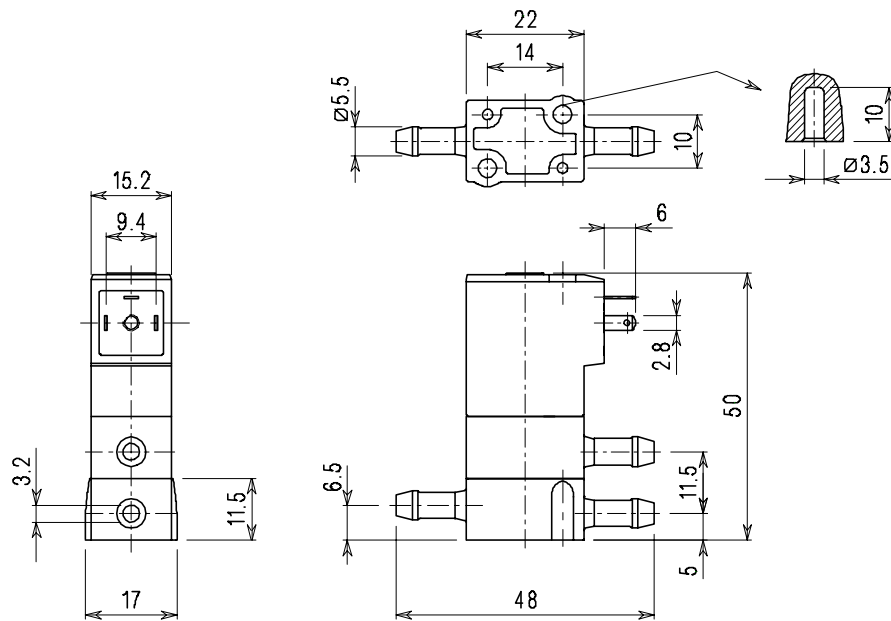
**CODE R**

**SPARE PARTS LIST**

- 1.Coil
- 2.Diaphragm



**OVERALL DIMENSIONS**



Weight 0.04Kg