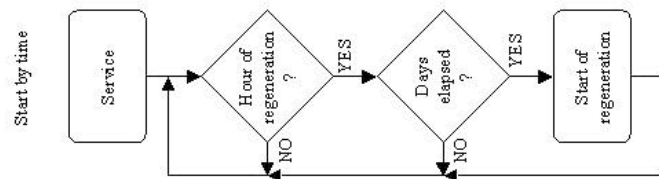
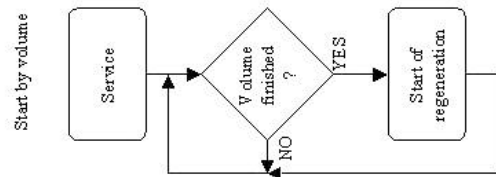
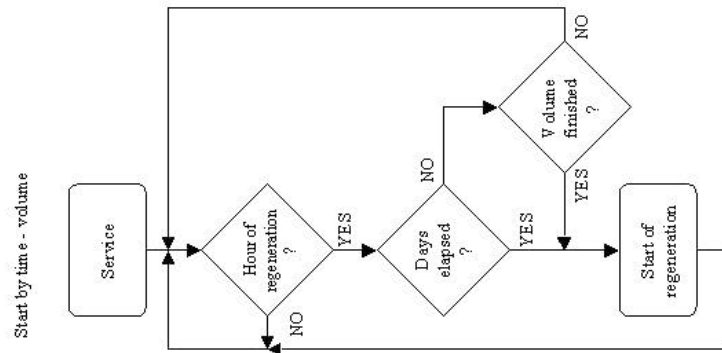


**Working cycle graphic description.**




## AQUA CLOR PROGRAMMING RAPID GUIDE



Via Virginio 370 – 372  
 Montespertoli – Florence – ITALY  
 Tel. ++39 – 571 – 6301  
 Fax ++39 – 571 – 630269  
<http://www.siata.com>  
 E-mail: siata@siata.com

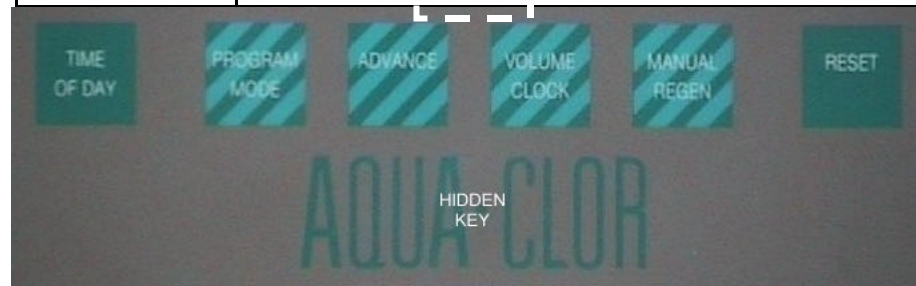
**Programming table**

Step		Display	Meaning
1	PROG. MODE	0.2.3.0	Regeneration starting time. Minutes are flashing.
2	PROG. MODE	0.2.3.0	Regeneration starting time. Hours are flashing.
3	PROG. MODE	F.F.0.7	Regeneration interval days.
4	PROG. MODE	2.0.0.0	Set volume. Right digits are flashing.
5	PROG. MODE	2.0.0.0	Set volume. Left digits are flashing.
6	PROG. MODE	0.0.0. 0.	Volume reserve. Right digits are flashing.
7	PROG. MODE	0.0.0. 0.	Volume reserve. Left digits are flashing.
8	PROG. MODE	A.A.1.4	Volume counter divider. Right digits are flashing.
9	PROG. MODE	A.A.d.d	Regeneration start selection: time / volume / mixed
10	PROG. MODE	A.A.d.d	Set display configuration.
11	TIME OF DAY	1.C.1.0	Regeneration cycle first stop time.
12	PROG. MODE	2.C.3.0	Regeneration cycle second stop time.
13	PROG. MODE	3.C.2.0	Regeneration cycle third stop time.
14	PROG. MODE	4.C.1.0	Regeneration cycle fourth stop time.
15	PROG. MODE	4.d.1.0	Programming is set. <b>All data are saved in eeprom.</b>
16		1.2.3.0	Time or volume data display can be selected.

**Troubleshooting**

FAULT	PROBLEMS	CORRECTIVE ACTION
The controller does not turn on	The socket is faulty. The transformer is faulty.	Verify by connecting another device to the same socket and the controller to another socket.
	The controller is blocked	If the controller works in volumetric mode, disconnect the water meter cable sensor, in order to check it against short circuit. Perform the reset as shown in par. 6.8 of the manual.
The motor does not stop on the limit cycle switch.	The limit cycle switch is damaged	Open the box and check the efficiency of the limit cycle switch and the other plastic parts.

	The cam is out of position	Open the box and check that the metallic ring is complete and that it is positioned in the right way. Check that the cam can activate the limit cycle switch.
The controller does not regenerate.	The controller is not programmed in the right way	Check the parameters programmed
	The controller is inhibited	Check the automatic regeneration start using the instructions of par. 6.10 of the manual.



**Command functions**

<b>TIME OF DAY</b>	Time of day setting. At the end of Program Mode, enters the regeneration cycle time setting.
<b>PROGRAM MODE</b>	Enters the programming parameters setting.
<b>ADVANCE</b>	By pressing it during the programming or time setting, it allows to increase the digit flashing. Keep it pressed for 10 seconds to enter the diagnostic.
<b>VOLUME CLOCK</b>	Changes the display mode, between time of day and the remaining volume.
<b>MANUAL REGEN</b>	Starts the regeneration cycle. By pressing it during a stop time of the regeneration cycle, sets to zero the time and reaches the next step.
<b>RESET</b>	During the programming, it allows to exit without saving the last data. By pressing it during the regeneration cycle, will cause the cycle to end.
<b>HIDDEN KEY</b>	Positioned below the 6 commands, between Advance and Volume/Clock, it allows a regeneration cycle test (1 min., phases). By pressing it during certain programming steps, sets to zero the digits flashing.

**Diagnostic parameters**

Display	Description
<b>0.2.3.0</b>	The hour of regeneration.
<b>F - 0.0</b>	The days elapsed from the last regeneration.
<b>0.0.0.0.</b>	The number of regenerations performed.
<b>0.0.0.0</b>	The volume left from the last regeneration.

**IMPORTANT!**

The programmed parameters are not immediately effective. They will be updated after the first regeneration. If the operator changes the parameters and doesn't perform a regeneration, or doesn't press the Reset command, the controller works with the former parameters, not with the latter ones.

**It is always suggested to press the reset command at the end of the assembly and programming of controller.**

Once turned on, keep the controller energised for at least 24 hours in order to obtain an appropriate battery efficiency.

**Aqua Clor is in compliance with the CE regulations.**