

DESCRIPTION

Solenoid valve 2 way normally closed in stainless steel AISI 316 with servoassisted diaphragm

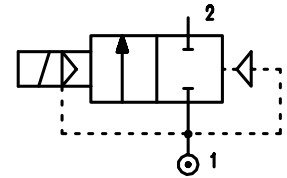
CONSTRUCTION

| | |
|------------------|-----------------|
| Body and cover | Stainless steel |
| Armature tube | Stainless steel |
| Plunger and core | Stainless steel |
| Springs | Stainless steel |
| Seal material | NBR |
| | FPM |
| | EPDM |



FEATURES

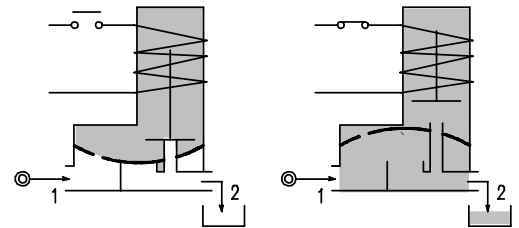
- Minimum differential pressure 0.15 bar
- Maximum allowable pressure 25 bar *
- Maximum fluid viscosity 25cSt (mm²/s)
- Ambient temperature : with class F coil -10°C +55°C
with class H coil -10°C +80°C
- Preferred mounting position with vertical coil above



4

OPTIONS :

- Manual override
- Explosion proof coil according to ATEX - EExmII Series 7
- Food approval seal material
- Version with slow closing diaphragm
- Version for use with oxygen
- Silver shading ring



| CODE ① ② | Connection G ISO 228 | Orifice mm | KV m ³ /h | Differential pressure bar | | | Nominal power | | | Coil | | Seal ① | Temp. range °C |
|----------------------|----------------------------|---------------|-------------------------|------------------------------|-----|----|---------------|---------------|------------|--------|-------|--------------------------|------------------------------|
| | | | | Min | Max | | AC Inrush | VA Holding | DC Watt | Series | Width | | |
| | | | | | AC | DC | | | | | | | |
| E177C.....12///..... | 3/8" | 12 | 2.2 | 0.15 | 15 | 15 | 12 | 8 | 6.5 | 3 | 22 | NBR=B EPDM=E FPM=V | -10 +90 <+140 -10 +130 |
| E177D.....12///..... | 1/2" | 12 | 2.5 | 0.15 | 15 | 15 | 12 | 8 | 6.5 | 3 | 22 | | |
| E177E.....18///..... | 3/4" | 18 | 5.5 | 0.15 | 13 | 13 | 12 | 8 | 6.5 | 3 | 22 | | |
| E177F.....25///..... | 1" | 24 | 10.2 | 0.15 | 10 | 10 | 12 | 8 | 6.5 | 3 | 22 | | |

- ① Seal
- ② Coil

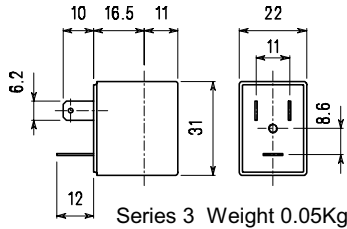
Example: E177DV12///301 FPM seal
Coil 24V DC

* REMARK: The maximum allowable pressure PS for steam is 2,5bar (gauge pressure)

| COIL | Alternating Current ~50/60Hz Volt | | | | | | | Direct Current Volt | | | Electrical connection | Connectors |
|--------------------------------|--------------------------------------|-----|-----|-----|------------|-----|-----|------------------------|-----|-----|--------------------------|-------------------------|
| | 12 | 24 | 48 | 110 | 220 230 | 240 | 380 | 12 | 24 | 48 | | |
| Series 3 Width 22 Code ② | 30A | 30B | 30C | 30D | 30E | 30F | 30G | 300 | 301 | 302 | DIN 46244 | PG9 code 10348000 |

DESCRIPTION
 Class F insulation
 Voltage tolerance
 AC +15% -10%
 DC ± 10%
 Protection class
 IP65 with connector fitted
 IP00 without connector
 Continuous service ED100%

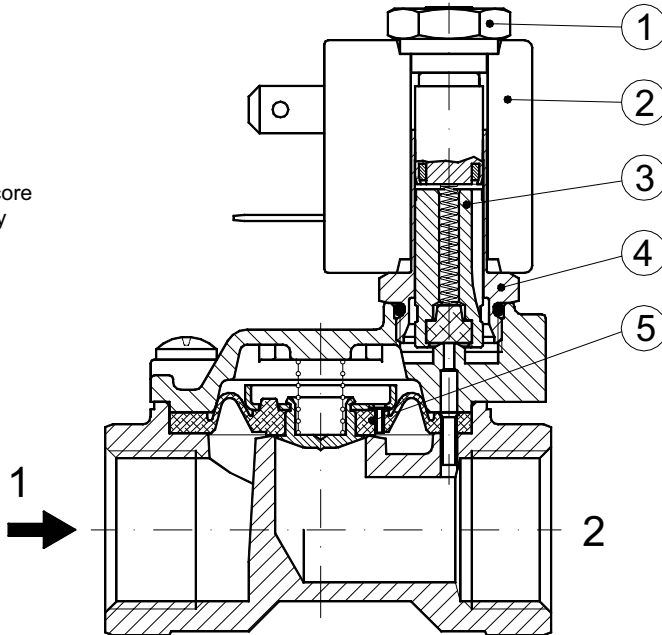
OPTIONS
 Class H insulation
 Cable attached
 Special coil powers
 Special coil voltages



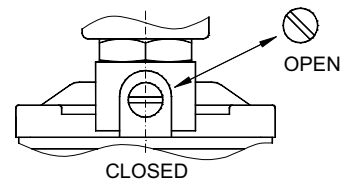
Series 3 Weight 0.05Kg

SPARE PARTS LIST

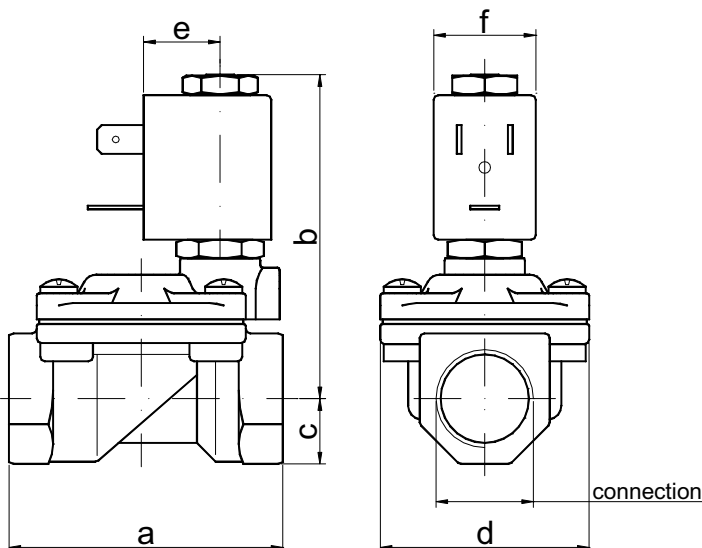
1. Coil fixing nut
2. Coil
3. Plunger
4. Armature tube with core
5. Diaphragm assembly



MANUAL OVERRIDE



OVERALL DIMENSION



| CONNECTION | a | b | c | d | Weight Kg |
|------------|----|----|----|----|--------------|
| G3/8" Ø12 | 59 | 70 | 11 | 45 | 0.31 |
| G1/2" | 59 | 70 | 13 | 45 | 0.32 |
| G3/4" | 79 | 74 | 18 | 54 | 0.75 |
| G1" | 96 | 85 | 20 | 72 | 1.35 |